



Ready to integrate with Keithley, Agilent, or Tektronix instrumentations



SIGNATONE CORP.

393-J Tomkins Court,
Gilroy, CA 95020, USA
Bus: (408) 848-2851 Fax: (408) 848-5763
Email: sales@signatone.com
<http://www.signatone.com>

Typical Probe Station Platforms ‡	WL350	WL210e	CM170
Temperature Range‡	Ambient, Ambient to 300°C, -60°C to 300°C	Ambient, Ambient to 300°C, -60°C to 300°C	Ambient, Ambient to 300°C
Chuck Power Handling (3kV triax/10kV coax, 450A pulsed/10A DC)	●	●	●
HVP-CX-3 3kV coax high voltage probe	●	●	●
HVP-TX-3 3kV triax high voltage probe	●	●	●
HVP-CX-10 10kV coax high voltage probe	●	●	●
HCP-100 100A Kelvin high current probe	●	●	●
VersaPath Chuck Switch System	●	●	●
Safety Interlock Integration	local chamber	local chamber	protective safety dark box
System Interface Panels(HV/HC)	●	●	●
Chuck Cabling Kit	●	●	●
PR Zoom Digital Imaging System	●	-	-
Contact Verification System	●	○	○
High Power Probe Card Integration Kit	●	●	●

- Feature available/applicable on platform.
- ‡ Other platforms/ranges available, please inquire.
- This feature is dependent on meter used.
- This feature is not applicable on platform.

2014 Rev. A



PowerPro System (WaveLink Series as shown)

For 3kV triax/10kV coax, 100A pulse power semiconductor characterization

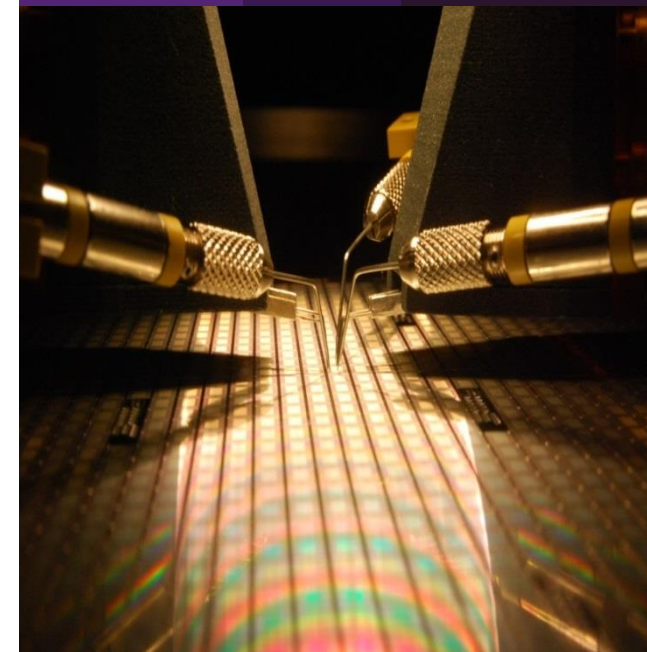
High power thermal chuck -60°C to 300°C

Built-in safety interlock

Manual/Semi-automatic systems available

SIGNATONE POWERPRO Probe Stations

An all-around high power probing solution for the power electronics industry



For years the only way for power semiconductor scientists and engineers to characterize their devices is at package level. While packaging is an available and mature technology, it invariably incurs cost and time for each batch of devices to be characterized. With Signatone PowerPro solutions, users now can probe their wafer up to 3kV triax/10kV coax, and 450A pulsed/10A DC for off-state, on-state, and current collapse characterizations.

For on-state measurement, the PowerPro provides users the option of pad-level Kelvin probing on one integrated probe, a capability that's unparalleled in the industry! The innovative and unique design provides the flexibility to adjust probe size and X-Y-Z position for evolving pad designs.

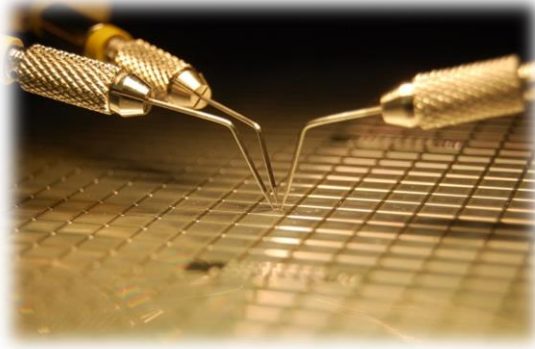
High Current Probe HCP-100/HCP-450



The Kelvin-capable HCP high current probe is the only probe design of this type in the industry today. The multi-probe design distributes current among the contact points and heat sink remove heat from probe-pad interface to prevent overheating. The design also gives users the ability to have Kelvin access to device at the pad level with minimal hardware investment.

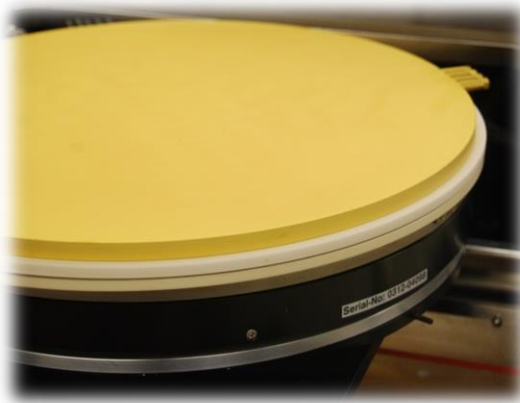
Only one set of positioner/probe head is required for each device terminal for Kelvin capability.

High Voltage Probe HVP-3-TX/HVP-3-CX



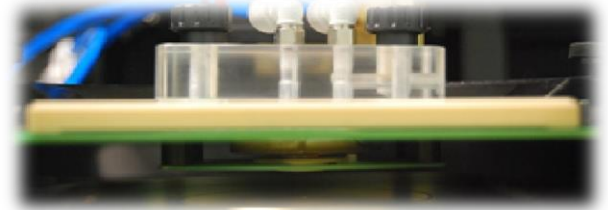
For off-state measurement, the high voltage probe provides integrated tri-axial capability for best high voltage and low current measurement. Both high current and high voltage probes utilize replaceable tips for minimal interruptions to user's measurements.

Gold Plated High Power Chuck



PowerPro chucks that are specifically designed to meet the challenges of probing power semiconductor wafers. Gold plated surface and zoned vacuum control provide excellent chuck contact to the backside of thin wafers. Kelvin connections for high current and high voltage signals ensure best results for both on-state and off-state measurements. VersaPath chuck switch system is an innovative approach that provides added safety and easy transition among floating, grounding, high voltage bias or high current bias states.

Anti-Arcing Solutions



Fluorinert has been used by many people as an arcing-suppression liquid for high voltage tests. However, in some situations such liquid is not an ideal solution. An anti-arcing probe card alternative is available. This special probe card utilizes an air-bearing chamber technology with compressed Clean Dry Air (CDA) to suppress arcing phenomena. This is a clean and cost effective alternative to the conventional arcing-suppression liquid.

For further information, please visit our website www.signatone.com, or contact us at sales@signatone.com