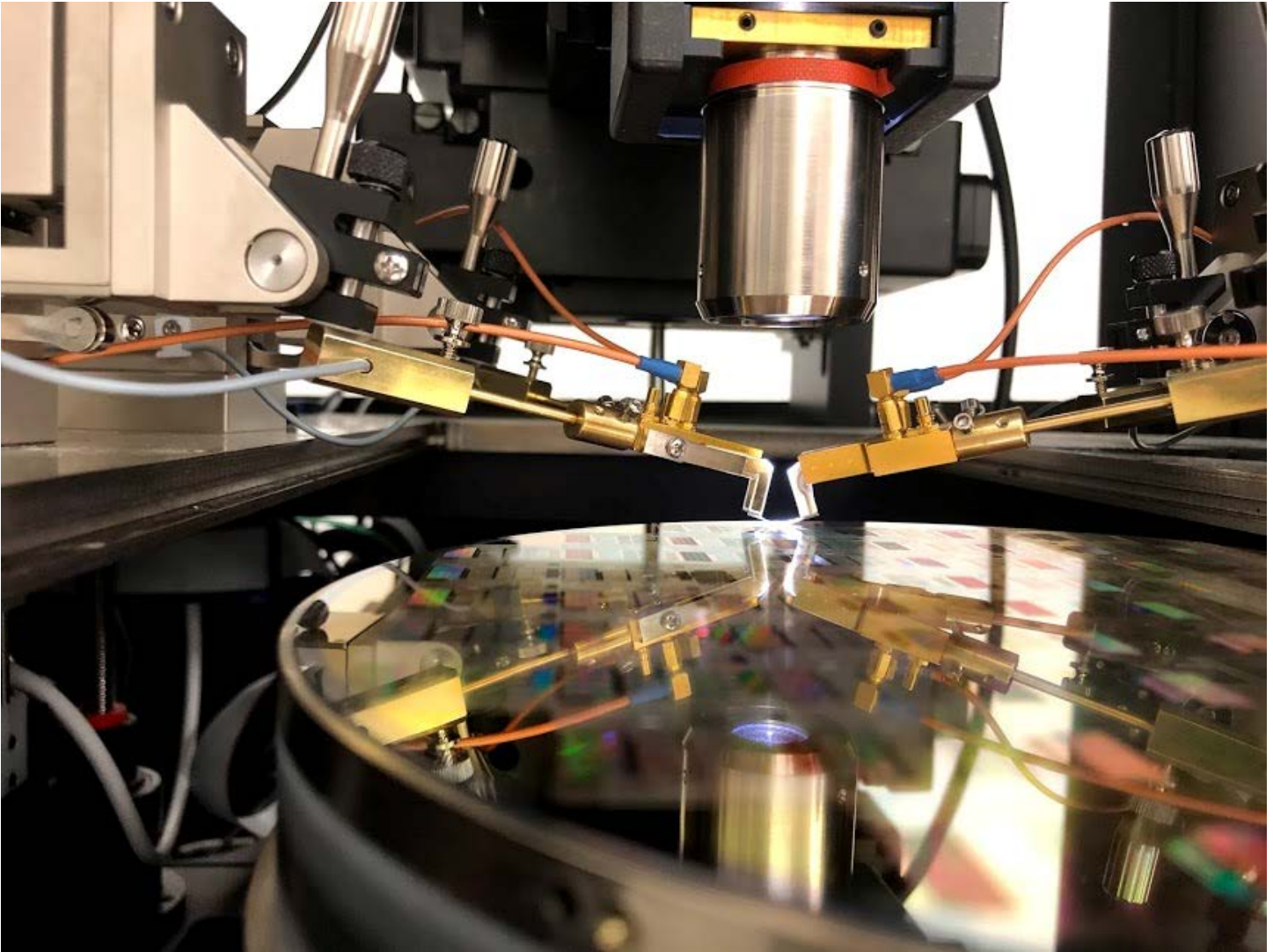


Signatone's Coaxial Blade Probe



The Signatone Coaxial Blade Probe is designed for use on all Signatone probe stations. Designed for stable probing of devices at high temperatures, the probes may be used at temperatures up to 300°C. The coaxial structure permits ceramic guarded blade probe tips to be mounted on Signatone micropositioners. The guarded ceramic blade probes allow low leakage measurements to <25fA. Dual SSMA connections allow Quasi Kelvin connections for sensitive resistance measurements or ground loop jumpers between multiple probes allowing G-S and G-S-G for higher frequencies.

- Temp range: -60 to +300
- Connectors: SSMA connectors
- Ambient Leakage: <25fA
- High Temperature Leakage: <3pA @ 300°C*

Signatone offers our own line of hot chucks for use in various configurations that support many applications including RF/HF, Triaxial low noise, Coaxial, 3kV/10kV high power, CV/IV ...contact us for more information.

**when used in a properly isolated configuration.*

Made in the USA at:

Lucas Signatone Corp. 393-J Tomkins Court - Gilroy CA 95020 / TEL: 408-848-2851 / sales@signatone.com / www.signatone.com